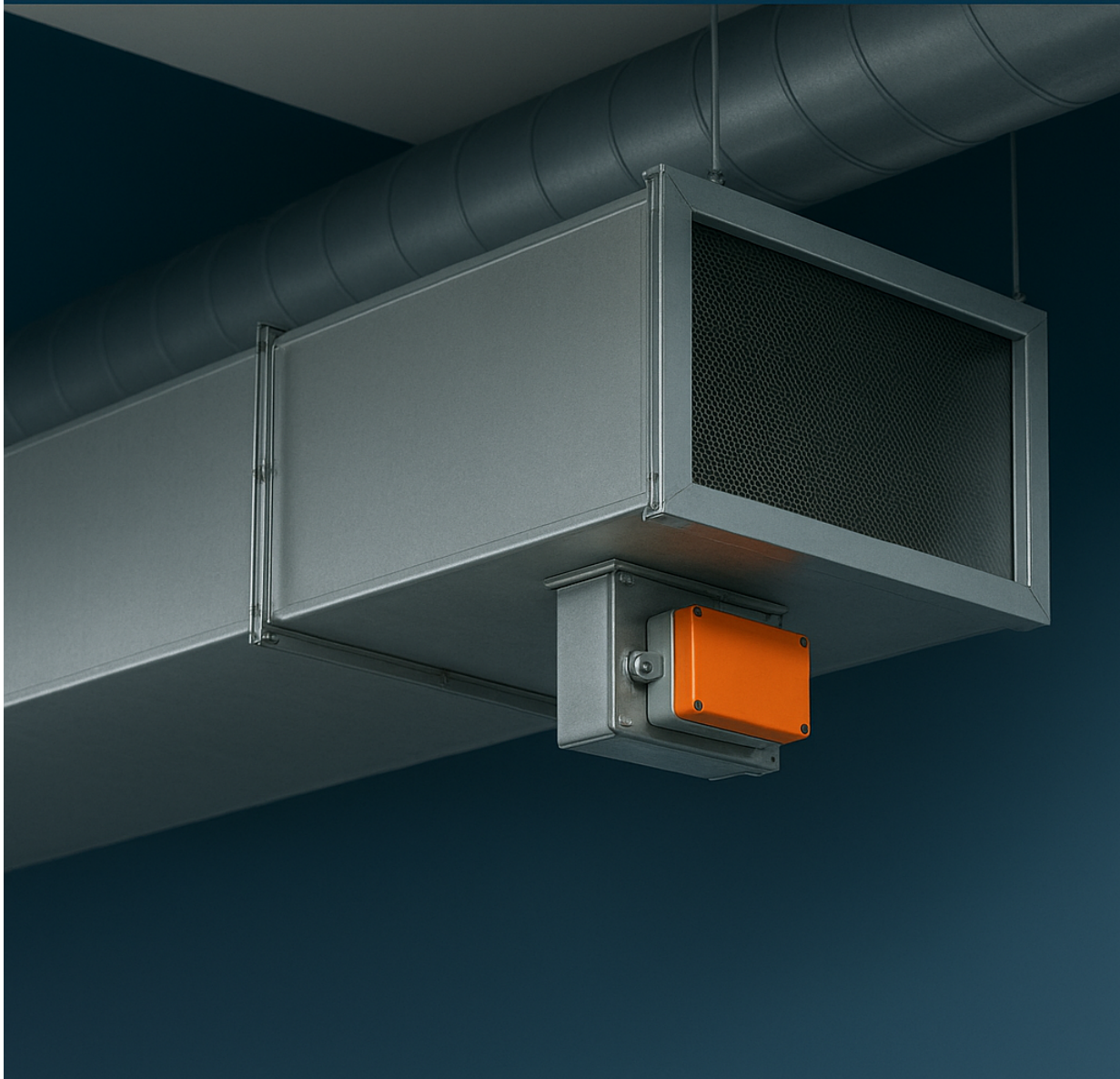


FIRE AND SMOKE CONTROL CONSIDERATIONS IN HVAC DUCTWORK DESIGN



Course Description

This course provides a comprehensive examination of fire and smoke control strategies in HVAC ductwork design for commercial, industrial, and multi-residential buildings. It explores the principles and performance requirements of passive and active control measures, including fire dampers, smoke dampers, and combination systems.

The course addresses duct material selection, compartmentalization, code compliance (NFPA, IBC, IMC), testing protocols, and best practices in system layout and maintenance. Emphasis is placed on protecting life safety, ensuring containment, and supporting building pressurization objectives during fire events.

Course Objectives

Upon completing this course, participants will be able to:

- Identify the role of HVAC systems in the propagation or containment of fire and smoke within a building.
- Understand the operation, design requirements, and placement of fire dampers, smoke dampers, and combination fire-smoke dampers.
- Evaluate HVAC ductwork design strategies that mitigate smoke migration and fire spread.
- Interpret relevant codes and standards, including those from the NFPA, IBC, and IMC, pertaining to fire and smoke control in ductwork.
- Apply compartmentalization and zoning strategies in duct routing and isolation.
- Recognize inspection, testing, and maintenance requirements for life-safety components within duct systems.

Intended Audience

This course is applicable to mechanical engineers, HVAC design professionals, fire protection engineers, building code officials, and engineers involved in MEP system coordination for all types of building infrastructure projects.

Table of Contents

Chapter 1: Fundamentals of Fire and Smoke Behavior in Buildings

- Mechanisms of fire propagation and smoke transport
- Smoke toxicity and thermal layering in duct systems
- Role of HVAC systems during fire events

Chapter 2: Design Principles for Fire and Smoke Control in Ductwork

- Ductwork as a pathway and barrier
- Objectives of containment and compartmentalization
- Passive vs. active control methods

Chapter 3: Fire Dampers

- Types and classifications of fire dampers
- Installation locations and mounting requirements
- Testing standards (UL 555) and performance ratings

Chapter 4: Smoke Dampers and Combination Fire-Smoke Dampers

- Functional differences from fire dampers
- Control integration with smoke detection and fire alarm systems
- UL 555S and control actuation methods
- Fail-safe positioning and airflow considerations

Chapter 5: Code Compliance and Engineering Standards

- NFPA 90A and 92 requirements
- International Mechanical Code (IMC) provisions
- International Building Code (IBC) mandates for life safety
- Local AHJ requirements and documentation practices

Chapter 6: Pressurization, Smoke Control, and Duct Layout Strategies

- Zone pressurization concepts
- Smoke control system interaction with HVAC design
- Stairwell and elevator shaft pressurization
- Duct layout methods to support containment and access

Chapter 7: Inspection, Testing, and Maintenance (ITM) of Life-Safety Dampers

- NFPA 80 and 105 inspection cycles
- Accessibility for testing and damper resetting
- Commissioning practices and verification
- Maintenance best practices

Chapter 8: Materials and Construction Requirements for Fire-Rated Ductwork

- Fire-resistive duct assemblies
- Duct insulation systems (wraps vs. enclosures)
- UL listings and fire rating verification

Chapter 9: Case Studies and Lessons from Real-World Fires

- Case Study 1: The MGM Grand Hotel Fire (Las Vegas, 1980)
- Case Study 2: Cook County Administration Building Fire (Chicago, 2003)
- Case Study 3: Successful Performance at The Shard (London, 2014 Smoke Incident)
- Summary of Patterns and Critical Issues

Chapter 10: Emerging Trends and Best Practices in Fire-Safe HVAC Design

- Smart damper systems and remote diagnostics
- Integration with building automation systems (BAS)

- Innovations in duct sealing and fireproofing
- Resilience-Oriented Design Approaches
- Evolving Codes and Future Expectations
- Conclusion

Chapter 1: Fundamentals of Fire and Smoke Behavior in Buildings

The movement of fire and smoke within buildings is governed by a combination of physical principles including thermodynamics, fluid mechanics, and material combustion properties. HVAC systems, particularly ductwork, play a significant role in either facilitating or hindering the spread of fire and smoke.

This chapter introduces the foundational concepts necessary to understand how fire and smoke interact with HVAC systems and the built environment.

Mechanisms of Fire Propagation and Smoke Transport

Fire propagation in buildings is a function of fuel availability, oxygen supply, and heat. As a fire develops, it generates heat, smoke, and combustion gases, which are buoyant and tend to rise due to lower density. These products of combustion migrate through vertical shafts, ceiling voids, stairwells, and HVAC duct systems.

Smoke movement is typically more dangerous than flame spread in the early stages of a fire, as smoke contains a mix of toxic gases, including carbon monoxide, hydrogen cyanide, and particulates that impair visibility.

Pressure differences within the building—created by HVAC systems, wind, stack effect, or fire-induced thermal expansion—can draw smoke into ductwork and transport it to areas remote from the origin of the fire. Understanding these pressure differentials and air movement is essential for predicting and controlling smoke behavior.

Smoke Toxicity and Thermal Layering in Duct Systems

One of the most dangerous aspects of a building fire is smoke inhalation. Even in buildings with relatively small fires, smoke can quickly render upper floors and escape paths uninhabitable. The HVAC system can exacerbate this by distributing smoke through ducts unless properly controlled.

Thermal layering refers to the stratification of hot smoke and cooler air, typically forming distinct temperature layers in confined spaces. In ducts, this layering may be disrupted, but the thermal energy can still transfer through the metal surfaces, potentially igniting materials in adjacent areas. Ducts can also become conduits for heat transfer, allowing fire to reach areas otherwise shielded from direct flame.

Role of HVAC Systems During Fire Events

HVAC systems are designed primarily for comfort conditioning and air quality, but during a fire, they can inadvertently contribute to the spread of heat and smoke unless equipped with properly functioning fire and smoke control devices. Return air ducts, in particular, can draw in smoke from a fire zone and distribute it throughout the building. Supply ducts may do the same if fire penetrates an air handling unit.

To counter this, fire protection strategies in HVAC systems rely on the use of passive devices (such as fire and smoke dampers) and active systems (such as smoke control fans and pressure differentials). These systems must be carefully engineered to ensure they respond appropriately during a fire, often in coordination with the building's life safety systems.

In fire events, many HVAC systems are shut down or placed into a fire mode by the building automation system. This may include closing dampers, stopping fans, or reversing airflow to create pressure zones that protect egress routes.

This chapter has established the basic understanding of fire and smoke behavior as it relates to HVAC systems. With this foundation, subsequent chapters will focus on specific design considerations, devices, code requirements, and best practices for ductwork in fire and smoke control strategies.

Chapter 2: Design Principles for Fire and Smoke Control in Ductwork

Designing HVAC duct systems to control fire and smoke spread involves a balance of structural, mechanical, and life-safety engineering. This chapter outlines the primary design philosophies used to minimize the risk of fire and smoke propagation through HVAC ducts. These include concepts of containment, compartmentalization, passive and active protection, and the integration of fire-rated components.

Ductwork as a Pathway and Barrier

Ducts are inherently dual-purpose during fire scenarios—they can serve as pathways for smoke and flame spread, or as barriers when properly outfitted. A key consideration in design is recognizing every duct as a potential conduit for fire and smoke unless isolated or controlled.

Ducts pass through numerous fire-rated walls, floors, and ceilings, potentially breaching fire-resistance-rated assemblies. Without suitable mitigation, this can nullify the effectiveness of compartmentation. Therefore, ducts must be viewed not only as part of the HVAC system, but also as integral elements in the building's fire resistance design.

Objectives of Containment and Compartmentalization

Effective fire and smoke control in duct systems begins with containment. The objective is to isolate fire and smoke to the room or compartment of origin, thereby protecting occupants in other parts of the building and limiting property damage.

Compartmentalization refers to the architectural strategy of dividing a building into distinct fire zones. HVAC systems must be coordinated with this layout, using fire and smoke dampers where ducts penetrate compartment boundaries. This design intent is codified in fire and building codes, which often mandate fire-rated duct construction or protective measures at these penetrations.

In addition to fixed fire-rated barriers, systems may incorporate flexible compartments, such as smoke zones or pressurized corridors, where airflow can be actively manipulated in response to fire conditions.

Passive vs. Active Control Methods

Fire and smoke control measures in HVAC systems are categorized into passive and active strategies.

Passive controls are built-in safeguards that function without external actuation. These include:

- Fire dampers that close automatically under heat activation
- Fire-resistive duct enclosures or wraps
- Sealed duct joints and penetrations

Passive systems are generally more reliable in early fire stages but may not provide dynamic control over smoke migration.

Active controls involve components that respond to sensors, alarms, or manual triggers. These include:

- Smoke dampers that respond to smoke detectors
- Combination fire-smoke dampers with integrated control systems
- Smoke exhaust fans and pressurization systems

While active systems offer greater control, they rely on interdependent systems (such as smoke detection and power supply) and require coordinated design and commissioning.

The most robust designs use a hybrid approach—passive features provide inherent protection, while active systems respond to evolving fire dynamics to maintain safe egress paths and containment.

Understanding these foundational principles of design equips HVAC professionals to evaluate and implement strategies that not only meet code but also enhance building safety and performance during fire events.

Chapter 3: Fire Dampers

Fire dampers are critical components in HVAC systems for preventing the spread of fire through ductwork. They are passive devices, activated by heat, and serve to restore the integrity of fire-rated barriers where ducts penetrate walls or floors.

This chapter details the types, operational mechanisms, installation requirements, and performance standards associated with fire dampers in duct design.

Types and Classifications of Fire Dampers

Fire dampers are classified based on their construction and mode of operation. The two principal categories are:

Curtain-Type Dampers

These are gravity-operated or spring-loaded assemblies consisting of interlocking blades held in place by a fusible link. When the link melts at a predetermined temperature (typically 165°F or 212°F), the blades drop closed to block the duct. Curtain-type dampers are most suitable for systems that shut down during a fire.

Multi-Blade Dampers

These are parallel or opposed blade assemblies that close under spring tension or by motor actuation when the fusible link or actuator is triggered. They are used in systems where airflow remains active and require a dynamic closure capability to overcome airflow resistance.

Fire dampers are also categorized as:

- **Static Dampers**, intended for use in ducts where airflow ceases upon fire alarm or smoke detection.
- **Dynamic Dampers**, which are designed to close under active airflow conditions and are tested to close against specified air velocities and pressures.

Dampers are rated by their fire resistance duration, typically in 1.5-hour or 3-hour configurations, and must match or exceed the fire rating of the penetrated barrier.

Installation Locations and Mounting Requirements

Per NFPA 90A and IBC standards, fire dampers are required at points where ductwork penetrates:

- Fire-rated walls
- Fire-rated floors and ceilings
- Smoke barriers, when required by code
- Shaft enclosures

Fire dampers must be installed to allow unobstructed closure. This includes:

- Ensuring proper alignment and clearance for blade movement
- Avoiding obstructions such as insulation or internal duct liners
- Securing the damper to the wall or floor assembly, not just the duct, to maintain the integrity of the fire-resistance-rated barrier

In horizontal duct applications, fire dampers are typically mounted with the blades parallel to the floor, while vertical duct penetrations require appropriate supports to handle the damper's weight and potential closure forces.

Proper orientation of the fusible link and accessibility for inspection and testing are essential. Dampers should be installed with access panels or doors for future servicing.

Testing Standards and Performance Ratings

Fire dampers must be tested in accordance with UL 555, the standard for fire dampers. This includes testing for:

- Closure reliability at rated temperature thresholds
- Resistance to airflow and pressure changes
- Mechanical endurance (number of operational cycles)

UL 555 also defines maximum allowed air leakage and pressure drops across the closed damper. Dynamic dampers are specifically tested to close under simulated airflow to reflect real-world conditions in operating HVAC systems.

Dampers must carry a UL label, indicating the manufacturer, model number, fire rating, airflow rating (if dynamic), and other pertinent specifications. This label must remain visible after installation.

Fire dampers must be field-tested upon installation and periodically as required by NFPA 80. The standard mandates testing one year after installation and every four years thereafter (or every six years for hospitals), ensuring that the damper will operate reliably in an emergency.

By selecting and installing fire dampers correctly, HVAC designers and contractors uphold the continuity of fire-rated assemblies and reduce the risk of duct-borne fire transmission throughout a structure.

Chapter 4: Smoke Dampers and Combination Fire-Smoke Dampers

While fire dampers are triggered by heat to prevent flame spread, smoke dampers are engineered to restrict or redirect the flow of smoke during fire events. They are often actuated by smoke detection systems and can function under operating airflows, making them essential for maintaining tenable egress paths and preserving the integrity of smoke control zones.

This chapter explores smoke dampers in detail, including combination fire-smoke dampers that fulfill both roles.

Functional Differences from Fire Dampers

Unlike fire dampers, which are primarily heat-activated and serve as passive closures, smoke dampers are active devices that respond to smoke detection or control signals from the building automation system.

They are essential where building codes mandate smoke compartmentalization, particularly in:

- Return air and exhaust systems
- Supply ducts penetrating smoke barriers
- Mixed-use zones requiring smoke control or pressurization

Smoke dampers close or modulate in response to smoke detector input or command signals. They often integrate with fire alarm control panels and building management systems to operate dynamically during a fire scenario, often as part of a larger smoke control strategy.

Control Integration with Smoke Detection and Fire Alarm Systems

Smoke dampers rely on signals from smoke detectors either located within the air duct or in the area surrounding the duct penetration.

Their control typically operates via:

- Low-voltage signal wiring
- Motorized actuators with spring-return functionality
- Smoke control panels and dedicated relays

The damper may be designed to close entirely to block smoke or modulate position to maintain building pressurization in stairwells, elevator shafts, and areas requiring controlled airflow paths. In many high-rise and healthcare facilities, smoke dampers serve as an active component of zone smoke control systems.

UL 555S and Control Actuation Methods

Smoke dampers must comply with UL 555S, which governs their leakage performance and closure reliability.

Unlike UL 555 for fire dampers, this standard focuses on:

- Maximum allowable leakage (Class I, II, or III ratings)
- Resistance to pressure differentials across the damper blades
- Operability under system airflow conditions

Class I smoke dampers are the most restrictive, allowing the lowest leakage rates, and are often required in sensitive zones such as hospitals or containment areas.

Actuation of smoke dampers typically involves:

- Electric or pneumatic actuators
- Spring-return or fail-safe mechanisms
- Manual overrides or test switches

The actuators must be capable of restoring the damper to its default state upon power failure, with “fail closed” or “fail open” logic depending on the system’s intended fire safety response.

Fail-Safe Positioning and Airflow Considerations

Smoke dampers must be designed with fail-safe positioning based on their role in the system:

- **Fail Closed:** Used to block smoke movement between compartments.
- **Fail Open:** Used in systems where ventilation or smoke exhaust must be maintained.

Their ability to function during system airflow conditions is critical. Dampers are rated to operate at specified velocities and pressures and must be matched to the duct conditions into which they are installed. High-velocity ducts may require reinforced damper blades and more powerful actuators.

The interaction of dampers with system fans must also be considered. Sudden damper closure can create pressure surges or damage ducts and fans if not coordinated through system design.

Combination fire-smoke dampers satisfy both fire and smoke containment functions and are commonly installed where ducts penetrate both fire-rated and smoke-rated assemblies. These devices must meet the requirements of both UL 555 and UL 555S and are marked accordingly.

Proper selection, placement, and wiring of smoke and combination dampers are essential for coordinated life safety operation in modern buildings. These dampers must also be accessible for inspection, testing, and replacement, ensuring reliability when most needed.

Chapter 5: Code Compliance and Engineering Standards

The design and implementation of fire and smoke control in HVAC ductwork must strictly adhere to national and local codes and standards. These regulatory frameworks establish performance requirements, inspection schedules, and safety mandates intended to protect occupants and property during fire events.

This chapter provides an overview of the most influential codes and standards governing fire and smoke protection in HVAC systems.

NFPA 90A and NFPA 92 Requirements

The National Fire Protection Association (NFPA) publishes several key documents related to HVAC systems and life safety. Two of the most relevant are:

NFPA 90A: Standard for the Installation of Air-Conditioning and Ventilating Systems

NFPA 90A governs the construction, installation, and protection of HVAC systems to limit the spread of smoke and fire through air ducts, air handling equipment, and related components. Among its core provisions are:

- Mandatory installation of fire dampers at penetrations of fire-rated assemblies.
- Requirement of smoke dampers at designated smoke barrier penetrations.
- Use of fire-resistant construction materials for ducts in certain applications.
- Minimum access requirements for damper testing and maintenance.
- Rules for the routing of ducts and spacing of duct supports in fire-rated environments.

NFPA 92: Standard for Smoke Control Systems

NFPA 92 focuses on the design, installation, testing, and maintenance of smoke control systems in buildings. It is especially relevant for high-rise structures, atria, and complex buildings requiring engineered smoke control systems. Key principles include:

- Smoke zone definition and compartmentalization requirements.
- Pressurization design for stairwells and elevator shafts.
- Smoke exhaust systems and their interaction with HVAC components.
- Use of control logic and fan systems to support safe evacuation.

These standards emphasize both prescriptive and performance-based design approaches and must be integrated into the mechanical and fire protection system planning phases.

International Mechanical Code (IMC) Provisions

The IMC, developed by the International Code Council (ICC), is widely adopted across the United States and serves as the legal foundation for mechanical system design in many jurisdictions. It outlines:

- When and where fire dampers and smoke dampers are required.
- The specifics of damper listing, labeling, and installation per UL standards.
- Requirements for ducts in plenums, shaft enclosures, and return air systems.

- Inspection and maintenance access to life safety dampers.
- Coordination of duct layout with fire-resistance-rated construction.

The IMC references NFPA standards and incorporates them into enforceable requirements. It also aligns with structural fire protection provisions outlined in the IBC.

International Building Code (IBC) Mandates for Life Safety

The IBC provides a broader framework for life safety in building design and construction, including fire protection and means of egress. Its provisions affect HVAC ductwork through requirements such as:

- Compartmentation and fire-resistance-rated construction.
- Fire and smoke damper usage at fire walls, fire barriers, smoke partitions, and horizontal assemblies.
- Requirements for maintaining the continuity of rated enclosures when penetrated by mechanical systems.
- Fire-resistive shaft construction and duct enclosure specifications.

The IBC mandates that all components affecting the fire-resistance of a structure—including HVAC ducts and dampers—be tested and listed for the intended use. It also calls for documentation and inspection to ensure that components are installed per their listing.

Local AHJ Requirements and Documentation Practices

Local Authorities Having Jurisdiction (AHJs) may impose additional requirements beyond those of national codes.

It is essential to:

- Confirm any regional modifications to the IBC or IMC.
- Submit duct layouts, damper schedules, and control schematics for permit review.
- Maintain inspection logs and test results for damper installations.
- Provide accessible labels and signage for all life safety dampers.

Some jurisdictions may require third-party inspection of fire and smoke dampers upon installation or after any modification to the HVAC system.

By thoroughly understanding and adhering to these codes and standards, HVAC engineers and contractors can ensure that ductwork systems contribute to the overall fire protection strategy of the building and meet all legal and safety requirements.

Chapter 6: Pressurization, Smoke Control, and Duct Layout Strategies

While fire and smoke dampers are essential for isolating fire zones, proactive smoke management requires a broader systems-level approach—particularly in large or multi-zone buildings.

This chapter covers engineered smoke control techniques using pressurization and specialized ductwork layouts that channel, contain, or extract smoke during emergencies. The design of ductwork in these systems must coordinate closely with architectural zoning, fire protection engineering, and building automation systems.

Zone Pressurization Concepts

Pressurization is a key method of smoke control used to prevent smoke migration into certain protected areas during a fire. By supplying air to select zones or exhausting air from fire-involved areas, designers can establish pressure differentials across smoke barriers that force smoke to move in a predictable direction—away from stairwells, corridors, or areas of refuge.

Common applications include:

- **Stairwell pressurization** to keep smoke out of exit pathways.
- **Elevator shaft pressurization** to prevent smoke from traveling vertically through core shafts.
- **Zoned floor pressurization**, often used in high-rise structures to isolate floors above or below the fire level.

Effective pressurization relies on:

- Ductwork capable of delivering required airflow volumes quickly.
- Dampers that open or close based on zone status.
- Sensors that monitor pressure and adjust fan speeds or damper positions accordingly.

Improperly sized or leaky ducts can undermine these systems, allowing smoke infiltration despite pressure controls. Therefore, tight duct construction and controlled leakage are fundamental.

Smoke Control System Interaction with HVAC Design

Smoke control systems can either be integrated into the building's HVAC or designed as separate, dedicated systems. In both cases, the ductwork must accommodate the unique airflow patterns and mechanical demands of emergency smoke handling.

When HVAC systems serve dual functions (comfort conditioning and smoke control), designers must:

- Include isolation dampers that redirect or cut off airflow during fire mode.
- Use variable frequency drives (VFDs) on fans to modulate airflow and maintain desired pressure differentials.

- Coordinate control sequences between smoke detection systems, building automation systems (BAS), and HVAC controls.

If a separate smoke control duct network is employed, it typically includes:

- Dedicated smoke exhaust ducts connected to roof fans.
- Supply air ducts that serve pressurized zones.
- Reinforced duct materials and supports capable of withstanding elevated temperatures and static pressures.

Whether integrated or standalone, control logic must be thoroughly tested during commissioning to ensure expected performance during real-world fire scenarios.

Stairwell and Elevator Shaft Pressurization

Vertical shafts are among the most critical zones for smoke control. A breach in containment here can lead to rapid smoke migration throughout an entire building. Stairwells require positive pressure relative to surrounding spaces to ensure they remain smoke-free for evacuation.

This is typically achieved through:

- Dedicated stairwell supply fans.
- Duct risers with multiple outlet grilles per floor.
- Automatic pressure relief dampers to avoid overpressurization.

Elevator shafts also benefit from pressurization but are complicated by the movement of elevators and doors opening on multiple levels. Often, a combination of shaft pressurization and vestibule zoning is used, with ductwork routing that supplies clean air and prevents smoke backflow.

In both cases, duct systems must be engineered to accommodate fast startup, reliable airflow control, and minimal pressure losses.

Duct Layout Methods to Support Containment and Access

To support fire and smoke containment, duct layouts must:

- Minimize the number of penetrations through fire and smoke barriers.
- Use straight, short duct runs where possible to reduce pressure drops and thermal transmission.
- Avoid unnecessary turns or obstructions that would impede airflow during emergency mode.

Where penetrations are necessary, designers should:

- Place fire/smoke dampers at the barrier interface.
- Ensure accessibility via access panels for inspection and testing.
- Identify duct sections that require fire-rated construction or additional fireproofing wraps.

The physical routing of ducts should also facilitate maintenance access to life safety dampers and sensors. It is common to see ductwork routed through accessible corridors or ceiling spaces instead of concealed plenums when life safety features are involved.

Ultimately, the interplay between ductwork design, compartment zoning, pressurization, and smoke control requires a holistic understanding of building flow dynamics and emergency response priorities.

Chapter 7: Inspection, Testing, and Maintenance (ITM) of Life-Safety Dampers

The long-term performance of fire and smoke dampers is not solely dependent on proper selection and installation—it also hinges on routine inspection, testing, and maintenance (ITM).

This chapter explores the ITM requirements laid out by national standards and discusses best practices for ensuring life-safety damper functionality throughout the lifecycle of an HVAC system.

NFPA 80 and 105 Inspection Cycles

Two key NFPA standards govern damper maintenance:

- **NFPA 80**, *Standard for Fire Doors and Other Opening Protectives*, covers **fire dampers**.
- **NFPA 105**, *Standard for Smoke Door Assemblies and Other Opening Protectives*, governs **smoke dampers**.

Both standards outline the minimum inspection and testing requirements for newly installed and existing dampers.

Fire Dampers (NFPA 80):

- All fire dampers must be tested and inspected **one year after installation** to verify proper operation.
- Subsequent inspections must occur **every four years**, or **every six years** in hospitals.
- Dampers must be operated to verify that they fully close without interference.
- Any obstructions must be removed, and fusible links must be examined and replaced if corroded or painted.

Smoke Dampers (NFPA 105):

- Smoke dampers must be tested **one year after installation** and then at intervals **recommended by the manufacturer**, or **every four years** if no recommendation is provided.
- Testing must verify proper actuation by smoke detection or control panel signal.
- Actuators must function correctly and restore the damper to its normal position after the signal ends.

Accessibility for Testing and Damper Resetting

In order to comply with NFPA testing procedures, all dampers must be **readily accessible**.

The duct layout and building design should ensure that:

- Each damper is reachable via an access panel or service hatch.

- Access points are clearly labeled and sufficiently large to allow for visual inspection and manual testing.
- Where dampers are concealed above ceilings or within shafts, doors or panels must be installed during construction to enable future access.

Lack of access is one of the most common causes of non-compliance and deferred maintenance. Engineers must ensure that architectural coordination allows for these service pathways.

Commissioning Practices and Verification

Commissioning of fire and smoke dampers should be integrated into the broader building systems commissioning process, particularly in structures requiring life-safety certification.

This includes:

- **Verification that each damper is installed per its UL listing and design specifications.**
- **Functional performance testing** of each damper under controlled conditions.
- **Integration testing** with fire alarm and building automation systems to ensure proper response to signals.
- **Documentation and turnover** of inspection logs, manufacturer data, damper schedules, and control logic.

Commissioning must be witnessed by a qualified engineer or commissioning authority. Damper models, ratings, and serial numbers should be cataloged into the building maintenance system.

Maintenance Best Practices

Routine damper maintenance should include:

- Cleaning of blades and tracks to remove dust, insulation debris, and corrosion.
- Lubrication of moving parts as recommended by the manufacturer.
- Re-tightening of mounting hardware and re-sealing of any disturbed insulation.
- Replacement of fusible links, actuators, or springs showing signs of wear or damage.

Where dampers are integrated with electronic control systems, the functionality of limit switches, feedback signals, and override controls should be verified during each test cycle.

ITM programs should be scheduled, documented, and tied to the building's safety compliance strategy. Regular audits help ensure that dampers will perform reliably in an emergency and that facility owners are meeting their regulatory responsibilities.

Chapter 8: Materials and Construction Requirements for Fire-Rated Ductwork

While dampers serve as the first line of defense at fire and smoke barriers, the ductwork itself may be required to resist fire penetration over extended periods—especially in critical zones such as smoke exhaust ducts, pressurized escape routes, and shafts.

This chapter focuses on the materials, fabrication techniques, and fire-rated assembly requirements for HVAC ductwork when required to resist fire exposure.

Fire-Resistive Duct Assemblies

In scenarios where a duct must remain operational during a fire or cannot be protected using fire dampers alone, the duct system itself must possess fire-resistive properties. These fire-rated ducts are constructed to maintain their structural integrity, prevent collapse, and contain fire and smoke for a prescribed duration (typically 1, 2, or 3 hours).

Fire-resistive duct assemblies can be achieved through:

- Factory-fabricated ducts that are UL-listed as fire-rated.
- Field-applied fireproofing materials, such as fire wrap insulation systems.
- Constructing ducts within fire-rated shaft enclosures.

These assemblies must undergo rigorous testing, such as ASTM E119 (Standard Test Methods for Fire Tests of Building Construction and Materials) or ISO 6944, to confirm their performance under direct flame exposure.

Duct Insulation Systems (Wraps vs. Enclosures)

Two primary strategies are used to provide fire resistance to ducts:

Fire Wrap Systems

These involve wrapping standard sheet metal ducts with flexible, fire-resistive insulation blankets. These materials often include ceramic fiber or intumescent composites and are UL-listed as part of a fire-rated assembly.

Fire wrap systems must be:

- Installed with continuous coverage, including around corners and hangers.
- Secured using appropriate stainless steel bands or staples, as per listing instructions.
- Labeled at regular intervals to confirm rating and compliance.

Advantages include ease of field installation and retrofit capability in existing structures.

Enclosures and Shafts

In this approach, ductwork is routed through constructed shafts built from fire-rated gypsum board or masonry. The shaft assembly, not the duct, provides the fire resistance.

This method is preferred when ducts run vertically between multiple floors or when large ducts make fire wrapping impractical.

It is critical to:

- Maintain continuity of shaft walls and ceilings.
- Properly seal shaft penetrations using listed firestop systems.
- Coordinate with architectural trades during construction.

Each method has advantages depending on duct routing, accessibility, and project budget. In some complex smoke control systems, a combination of both strategies may be used.

UL Listings and Fire Rating Verification

All fire-resistive duct systems—whether wrapped or enclosed—must carry an applicable **UL classification**.

Designers and installers must follow the manufacturer's **listed assembly instructions**, which include:

- Duct gauge and joint type.
- Minimum wrap overlap or shaft wall thickness.
- Hanger and support specifications.
- Maximum duct dimensions and configuration limits.

Deviations from listed assemblies void the fire rating and are considered code violations.

Installations must be visually inspected by qualified personnel to confirm that all components match the listed assembly and that no gaps, tears, or compression in insulation compromise its integrity. Photographic documentation and third-party verification are often required, especially in healthcare and high-rise buildings.

Proper documentation of fire-rated duct construction is essential for building inspectors and future maintenance personnel.

Labels should indicate:

- Rating duration (1-, 2-, or 3-hour).
- Installation date.
- UL assembly number.
- Responsible contractor or firm.

Using materials and construction methods that have been tested and listed for fire exposure not only meets code—it ensures that critical duct systems perform reliably under the extreme conditions of a building fire.

Chapter 9: Case Studies and Lessons from Real-World Fires

Understanding the critical role HVAC ductwork plays in fire and smoke propagation is reinforced by studying real-world incidents where systems either succeeded or failed in their protective role. This chapter presents selected case studies to highlight key lessons, recurring mistakes, and best practices identified from fire event investigations involving HVAC ductwork.

Case Study 1: The MGM Grand Hotel Fire (Las Vegas, 1980)

One of the deadliest hotel fires in U.S. history, the MGM Grand fire resulted in 85 deaths—primarily due to smoke inhalation. Though the fire originated in a ground-floor casino, the spread of smoke was facilitated by the hotel's HVAC system, which continued to operate during the early stages of the fire.

Key Failures:

- The HVAC system remained active after the fire began, redistributing smoke through the ductwork into hotel corridors and guest rooms.
- Fire and smoke dampers were either absent or failed to operate correctly.
- Lack of smoke compartmentalization and pressurization strategies enabled unrestricted migration of lethal smoke.

Lessons Learned:

- HVAC systems must be programmed to shut down or transition into fire mode when smoke is detected.
- Smoke dampers must be automatically actuated by the fire alarm system to isolate compartments.
- Post-event building codes began to require greater integration between mechanical and life safety systems.

Case Study 2: Cook County Administration Building Fire (Chicago, 2003)

This high-rise fire resulted in six fatalities, many of whom were trapped in stairwells filled with smoke. Though the fire was confined to a single floor, the stairwell pressurization system failed, and smoke entered escape routes.

Key Failures:

- Pressurization fans and associated ductwork were not functioning as designed.
- Improper damper settings allowed reverse airflow into stairwells.
- Lack of routine inspection and testing of the damper control system.

Lessons Learned:

- Pressurization systems must be commissioned and tested under fire-simulated conditions.
- Ductwork used for pressurization must be sealed, leak-tight, and protected from failure.
- Proper damper sequencing is essential to maintaining directional airflow.

Case Study 3: Successful Performance at The Shard (London, 2014 Smoke Incident)

A minor fire in an equipment room at The Shard—a 95-story skyscraper—prompted the activation of the smoke control system. The system effectively contained and extracted the smoke without endangering occupants or first responders.

Key Successes:

- Zoned smoke control and pressurization ductwork responded within seconds.
- Combination fire-smoke dampers isolated affected areas, allowing controlled smoke exhaust.
- Routine commissioning and digital controls allowed for adaptive system response.

Lessons Reinforced:

- Complex high-rise systems require smart integration between fire alarm, HVAC, and smoke control equipment.
- Advanced diagnostics and remote damper verification enhance emergency response.
- Redundant power supplies and fail-safe controls improve reliability.

Summary of Patterns and Critical Issues

A review of documented incidents highlights several recurring themes:

- **Failure to shut down HVAC systems** during fire exacerbates smoke spread.
- **Lack of damper testing** leads to inoperable or jammed devices.
- **Improper duct sealing or fire wrapping** allows heat and smoke to breach rated assemblies.
- **Successful designs incorporate commissioning, integration, and ongoing ITM.**

Incorporating these insights into future designs and maintenance programs ensures that HVAC ductwork performs not only in comfort conditioning, but also as a critical system for life safety and fire control.

Chapter 10: Emerging Trends and Best Practices in Fire-Safe HVAC Design

As building technologies advance and safety standards evolve, HVAC design practices must also adapt. This final chapter explores innovations and best practices that enhance fire and smoke control in ductwork systems, focusing on smarter integration, improved materials, and evolving regulatory expectations. These trends reflect a shift toward proactive, resilient, and automated life-safety systems.

Smart Damper Systems and Remote Diagnostics

A growing trend in HVAC fire safety is the integration of smart dampers capable of real-time monitoring and remote diagnostics.

These systems:

- Include built-in sensors that detect damper position, temperature, and actuator status.
- Communicate with building automation systems (BAS) via BACnet or Modbus protocols.
- Alert facility managers to faults, obstructions, or linkage failures before a fire event occurs.

Smart dampers can be tested remotely, reducing the need for manual inspection and allowing more frequent verification cycles. Some models incorporate fail-safe programming that resets the damper to a known safe position upon power loss or communication failure.

Integration with Building Automation Systems (BAS)

Modern BAS platforms allow for holistic management of HVAC, lighting, fire safety, and security systems.

When integrated effectively:

- Fire and smoke dampers can be actuated as part of pre-programmed sequences.
- Pressurization fans, VFDs, and duct valves can modulate based on real-time sensor inputs.
- System performance can be visualized through dashboards, facilitating emergency response coordination.

These systems can store historical data for compliance reporting and trend analysis, helping engineers identify developing issues such as increasing leakage or actuator degradation.

Innovations in Duct Sealing and Fireproofing

Advancements in fire-sealing products and duct insulation materials continue to improve both installation ease and performance:

- **Intumescent duct sealants** expand upon exposure to heat, sealing penetrations that may not be protected by dampers.
- **Lightweight, flexible fire wraps** now offer thinner profiles while maintaining 1-, 2-, or 3-hour fire ratings, simplifying tight-space installation.
- **Pre-fabricated fire-rated duct sections** are factory-assembled and UL-listed, offering consistency and reduced field labor.

Manufacturers are also developing **hybrid products** that combine thermal insulation, sound attenuation, and fire resistance into a single wrap or board.

Resilience-Oriented Design Approaches

Beyond code minimums, many engineers now employ resilience-based design strategies that anticipate worst-case scenarios, long-term degradation, and extreme events:

- Designing for **redundancy**, with parallel damper paths or dual smoke exhaust risers.
- Using **fail-open smoke exhaust systems** that provide continued operation even during component failure.
- Incorporating **fire simulations and computational fluid dynamics (CFD)** models during design to optimize smoke behavior predictions and damper placement.

In facilities such as hospitals, data centers, and high-rise buildings, these added layers of protection significantly enhance life-safety reliability.

Evolving Codes and Future Expectations

While NFPA and IBC codes continue to serve as the foundation for fire-safe duct design, the trend is moving toward:

- **Performance-based code compliance**, especially in complex buildings.
- Requirements for **system-level testing**, not just component testing, to verify actual building behavior.
- Integration of fire and HVAC commissioning into **total building commissioning** efforts.
- Greater **emphasis on maintainability and access** for all life-safety components during building inspections.

Municipalities and insurance carriers are also increasingly scrutinizing damper records, requiring digital logs, date-stamped inspections, and fault alerts—all of which support the shift to smarter, auditable systems.

Conclusion

The evolution of HVAC ductwork design for fire and smoke control reflects a broader shift toward smarter, more resilient, and integrated building systems. By embracing these emerging trends and codifying best practices into project standards, engineers can ensure that duct systems not only support thermal comfort but also serve as reliable tools in safeguarding life and property under fire conditions.

Bibliography

1. National Fire Protection Association (NFPA)
 - *NFPA 90A: Standard for the Installation of Air-Conditioning and Ventilating Systems*, 2024 Edition.
 - *NFPA 92: Standard for Smoke Control Systems*, 2021 Edition.
 - *NFPA 80: Standard for Fire Doors and Other Opening Protectives*, 2022 Edition.
 - *NFPA 105: Standard for Smoke Door Assemblies and Other Opening Protectives*, 2022 Edition.
2. International Code Council (ICC)
 - *International Building Code (IBC)*, 2024 Edition.
 - *International Mechanical Code (IMC)*, 2024 Edition.
3. Underwriters Laboratories (UL)
 - *UL 555: Standard for Fire Dampers*.
 - *UL 555S: Standard for Smoke Dampers*.
 - *UL Online Certifications Directory* (<https://iq.ulprospector.com/>).
4. ASHRAE Handbook – HVAC Applications, Chapter on Fire and Smoke Control.
 - ASHRAE, American Society of Heating, Refrigerating and Air-Conditioning Engineers, 2023 Edition.
5. Society of Fire Protection Engineers (SFPE)
 - *SFPE Handbook of Fire Protection Engineering*, 5th Edition. Springer, 2016.
6. U.S. General Services Administration (GSA)
 - *Smoke Control Design Guidelines for Federal Buildings*, Public Buildings Service, Office of the Chief Architect, 2021.
7. American Society for Testing and Materials (ASTM)
 - *ASTM E119: Standard Test Methods for Fire Tests of Building Construction and Materials*.
8. Notable Incident Reports:
 - *MGM Grand Hotel Fire Investigation Report*, U.S. Fire Administration, 1980.
 - *Cook County Administration Building Fire Report*, National Institute for Occupational Safety and Health (NIOSH), 2003.
9. Manufacturer Documentation
 - Greenheck, Ruskin, Nailor, and Loren Cook technical guides for UL-listed fire/smoke dampers and duct protection systems.

This course was prepared by Cadistics Courseware
All rights reserved

Educational Use Only

The content of this course is provided for educational purposes only. While every effort has been made to ensure the accuracy and reliability of the information presented, the author or publisher makes no guarantees regarding the completeness or applicability of the information to specific professional practices. Users are advised to consult additional resources and exercise professional judgment when applying the knowledge contained in this course.

Use of AI Generated Content

The continuing education (CE) courses offered on this platform are developed using advanced artificial intelligence (AI) methodologies to generate high-quality, text-based instructional content.

These courses are primarily designed to provide in-depth knowledge on engineering and technical subjects with minimal or no imagery, focusing on comprehensive textual explanations to convey concepts effectively.

While every effort is made to ensure accuracy, clarity, and compliance with professional standards, the nature of AI-assisted content generation means that occasional errors or inconsistencies may occur. Users are encouraged to critically evaluate the material and verify key technical details as needed. Additionally, these courses do not include interactive elements or extensive visual aids such as diagrams, charts, or illustrations unless explicitly stated.

By enrolling in and using these courses, participants acknowledge and accept that the content is primarily text-based and generated through AI-assisted processes. The course provider assumes no liability for any inaccuracies or omissions and advises professionals to apply their own judgment and expertise when utilizing course materials in practical applications.